

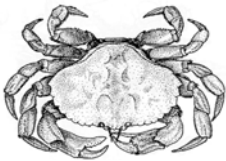
TOWNSENDS INLET REEF COORDINATES (continued)**ID - YEAR SUNK,
NAME, STRUCTURE****DGPS****SPONSORS**

20-07, TI Fluke 06, 77' Commercial Fishing Boat	3906.476 7436.471	2006 Townsends Inlet Fluke Tourn., Ann E. Clark Foundation
21-07, TI Fluke 07, 77' Commercial Fishing Boat	3906.605 7436.177	2007 Townsends Inlet Fluke Tourn., Ann E. Clark Foundation

FACT: Townsends Inlet reef site is the newest addition to the New Jersey artificial reef network. Since 2005, 8,406 cubic yards of reef material have been placed on the reef.



The 5th vessel deployed on the Townsends Inlet Reef, a 77-foot commercial fishing boat.

Rock Crab ~ *Cancer irroratus*

Rock crab is a local species that grows to 5.25 inches across the shell. They are dull yellow in color with small brown or deep purple spots on its back. These crabs prefer a sandy bottom and feed on worms and bivalves.

Summer Flounder ~ *Paralichthys dentatus*

Summer flounder are mottled brown with dark spots on the upper surface; five spots are consistent on all fish. Two spots are under the dorsal fin which are almost directly opposite two that are directly above the anal fin with one in between both pairs along the lateral line. As suggested by their name these fish are typically found in New Jersey waters only during the warm water months. These bottom dwellers can grow to 37 inches and around 26 pounds. Fish just off the bottom with moving bait such as squid strips or live killifish or silversides that will entice these ambush predators to strike.